

All about the 2014 Club Models

Features of the "Bubikopf" in Z-gauge
Technical refinement of E 9307 in H0

- Great Insider meet: the signal
- Märklin Engineering: idea smiths
- Kassel Round Table: the experts



Contents

Issue 06/2013

Detail

News: Review of the Club's anniversary year/Annual DVD part 2/
A look back at Friedrichshafen exhibition/round table established
at Oberkotzau 4
Club model 2014 in H0: Electric loco E 93 07 wit mfx+ decoder 6
Club model 2014 in Z-gauge: The high level of detailing on 64284 ... 10
Promotional models: interesting variety of types and designs 12



Class E93: Heavy freight loco with a passenger car for once.



Märklin Managing Directors Wolfram Bächle (left) and Florian Sieber.

Scene

Insiders meet Märklin management team: Märklin intends to embark
on a new era with further innovations and investment, as Club
members learned in their discussions with management 13
Portrait: At the Kassel Insider Round Table North Hessa KIST NH,
"everything specific to model railroads is chewed over" 16

Service

Overview: Contact data for all Insider round tables 20
News: Dates for digital info days 22
Cooperation partners: Discounts for Club members at the Freinsheim
Toy Museum and the Siku, Audi and Old-timer Museum 23
Editorial/masthead 3



Club partners: Toy treasures in the Freinsheim Toy Museum.

Imprint

Publisher

Gebr. Märklin & Cie. GmbH
Stuttgarter Str. 55-57
73033 Göppingen, Germany

Märklin Customer Clubs

Silvia Römpf (responsible)

Editorial

3G Media GmbH: Peter Waldleitner (editor-in-chief),
Lars Harnisch, Rochus Rademacher, Stefanie Hirrlé

Layout

Gerhard Baumann GmbH & Co. KG

Photographs

Unless indicated otherwise: Märklin Insider
Title: Ulrich Budde

No liability accepted for any dates given.

E 198510 – 06 2013 © by Gebr. Märklin

Club News is an exclusive part of this publication for Insider Club members. Subject to changes and delivery options for all the products mentioned here. All rights reserved. Reprinting in whole or in part only with prior written permission. This also applies for recording in electronic databases and duplication on CD-ROMs. The editor is not liable for any unsolicited submission of manuscripts, photographs or illustrations.

The Club mailing 06/2013 has the following enclosures:

Insider Club News 06/2013, Märklin Magazin 06/2013, DVD of the Year, part 2



6



Perfection: Layout artistry from the Kassel Insiders.

Dear Insiders,

For all Märklin Club members a memorable year draws to a close: the Insider Club's 20th anniversary was celebrated with excellent special models and has generated plenty of enthusiasm for the next 20 years. In this issue we take a look back over this anniversary year. Some of the undoubted high spots were the get-togethers at the 2013 IMA in Göppingen: in an open atmosphere Club members talked over the future of the Märklin group with the management team and product management. A further focus of this issue is naturally the Club models for 2014. Prominent in the foreground are the value, quality and features of the "German Crocodile" E 9307 in H0 and the "Bubikopf" class 64 in Z. Naturally the overview of prototype and model construction includes the subject of the exclusive car sets being produced to match the locomotives. We take particular pleasure in introducing the Kassel Insider Round Table KIST NH. At the meets, entertainment material never runs out, so the layout builders decided without delay to set up their own separate running day. In the Service section you'll find a list of round tables, which can also be downloaded in the Club area of the Märklin homepage. And to round it off, the issue also has the latest details on digital info days and new cooperation partners. Enjoy your reading!

Your Insider Club team

Your service numbers

Customer Service

Club hotline

Telephone Monday–Friday
from 10 a.m.–6.30 p.m.

Telephone: +49 (0) 71 61/6 08-2 13

Fax: +49 (0) 71 61/6 08-3 08

E-mail: insider-club@maerklin.com

Queries about technology, repairs and spare parts / complaints

Telephone Monday–Friday
from 10 a.m.–6.30 p.m.

Telephone **inland**: 0 90 01/6 08-2 22

(0.49 euro per minute from the German fixed
phone network, mobile tariffs may differ)

Telephone **from abroad**: +49 (0) 71 61/6 08-2 22

Fax: +49 (0) 71 61/6 08-2 25

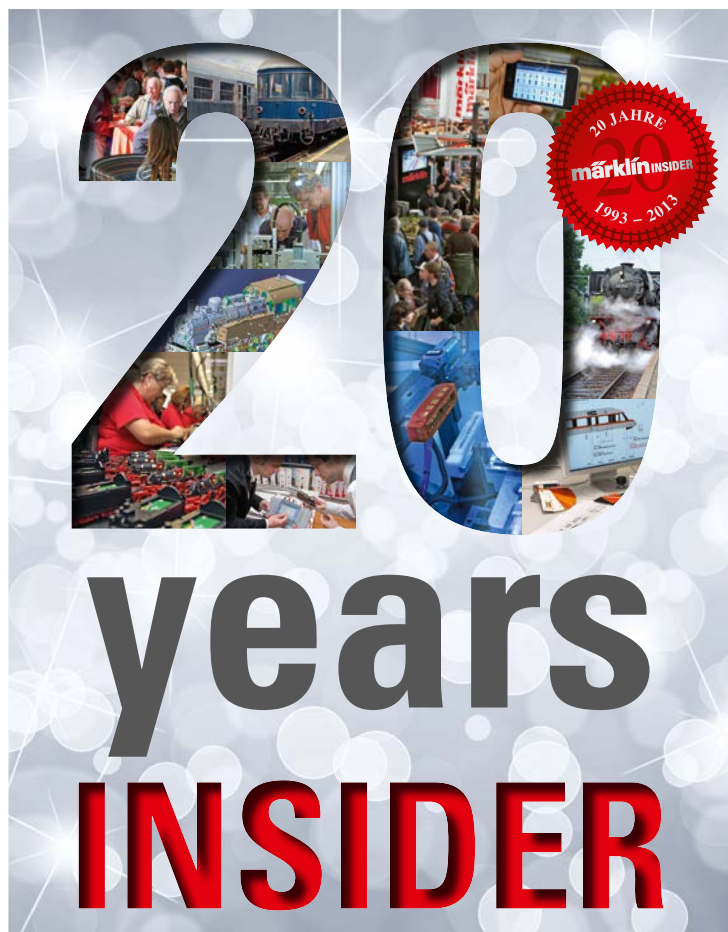
E-mail: service@maerklin.de

Internet

www.maerklin.de
club.maerklin.de

Moving?

Please inform us in good time of your
new address so we will know where we can
reach you. A forwarding address at the
Post Office unfortunately will not suffice.
Thank you for your cooperation!



Anniversary year 2013

Here's to the next 20

The year 2013 was all about the Club anniversary "20 years of the Insider Club". Märklin has produced two exclusive special series for all Club members: the H0 class 53.0 freight loco with condensing tender (item 37020) and the class 96 tank loco in Z-gauge (item 88294). Both locos go well with all the Annual Cars in their respective gauges and can be ordered at any time. If the order forms have been mislaid (they were sent out with the mailing 01/2013), or if you only just joined the Club, you are welcome to ask our Club team to send you a copy. Another premiere is celebrated by the anniversary models, which are reserved for Insiders with 20 years' uninterrupted Club membership: in H0 the steel-blue H0 class 05 express train passenger steam loco (item 39052) and a repair car (item 49965), and in Z the streamlined class 05 (item 88107) and a rail maintenance car set (item 82339). These four models will be offered in the coming years to the respective anniversarists.

Special series for the Club's 20th anniversary: The class 53.0 in H0 (below) and the class 96 tank loco in Z (left) will naturally be kept in the range. An order form can be requested from the Club team and the model ordered from your retailer.



Pure steam: class 58 and class 45

DVD Annual Chronicles part 2

Part 2 of the 2013 DVD of the Year will entertain you with exciting insights into the world of Märklin, the model railroad and of prototypes. Exclusively for Club members, classes 58, 03 and 45 are introduced in model and full size, and a visit to an enthusiastic Z-gaugers will make you want more of Z-gauge. The 20th anniversary of the Märklin factory in Győr is celebrated and there is a report to keep alive memories of the many events and superfine atmosphere at the IMA 2013 in Göppingen. Naturally the workshops are opened too: there's a presentation of the new layout with M-track. The Video of the Year part 2 is included with this mailing.

Messe Friedrichshafen

Fascination Märklin

At the Faszination Modellbau Friedrichshafen almost a hundred exhibitors presented all facets of the model railroad. Market leader Märklin was of course there too, with layouts and the latest range of models. Together with Faller, Märklin also put together an attractive program for children and young people which covered a large area – for encouragement of the younger generation, building and playing with Märklin my world are right in the foreground.



01. – 03.11.2013

Photo: M. Röer



Stage spectacle with Märklin: The musical Starlight Express is waiting for the winners of the Club competition.

Club competition Starlight Express

The right answer: class 101

The Club has drawn two pairs of entrance tickets exclusively among the membership for the world's most successful musical. The occasion was a significant one: Starlight Express in Bochum has now been enthralling audiences for 25 years. To mark the anniversary, Märklin has produced a special model of the promotional loco of this rail spectacular in H0 (item 39372) and Z (item 88675). In our online competition in the Club area, we asked what class was the "Starlight Express" 2013 promotional loco. The right answer of course was class 101, and many Club members knew that. So the draw decided the two lucky winners, who were Norbert Louis (61184 Karben) and Thorsten Linde (21745 Hemmoor). Our congratulations go to the winners, and we wish them a wonderful time at the swinging musical Starlight Express – where there are also Märklin models to be seen.

OberkotzauInsider Round Table

First class start

Hardly off the ground, and eight members already – the Insider round table in Upper Franconia in Oberkotzau has started well. "Our main aim is an open exchange of experience in a relaxed mode on models, electronics and layouts", organizer Alfred Peetz, who also announced the round table's launch with a flyer posted at the local Märklin retailer's. It's worth joining up with them right now, as the group is at the stage of defining its general interests and deciding how often and when its meets should take place. Round table spokesman Alfred Peetz is a dyed-in-the-wool Märklinist and layout constructor – he has a twelve-track loco depot on his layout. "That really started my seven-year-old grandson off – now he can control all the trains himself".



Favorite locomotive: The 01 class is a favorite with the Oberkotzau round table – after all, Hof was a stronghold of the class.

Photo: RhB/C. Sonderegger

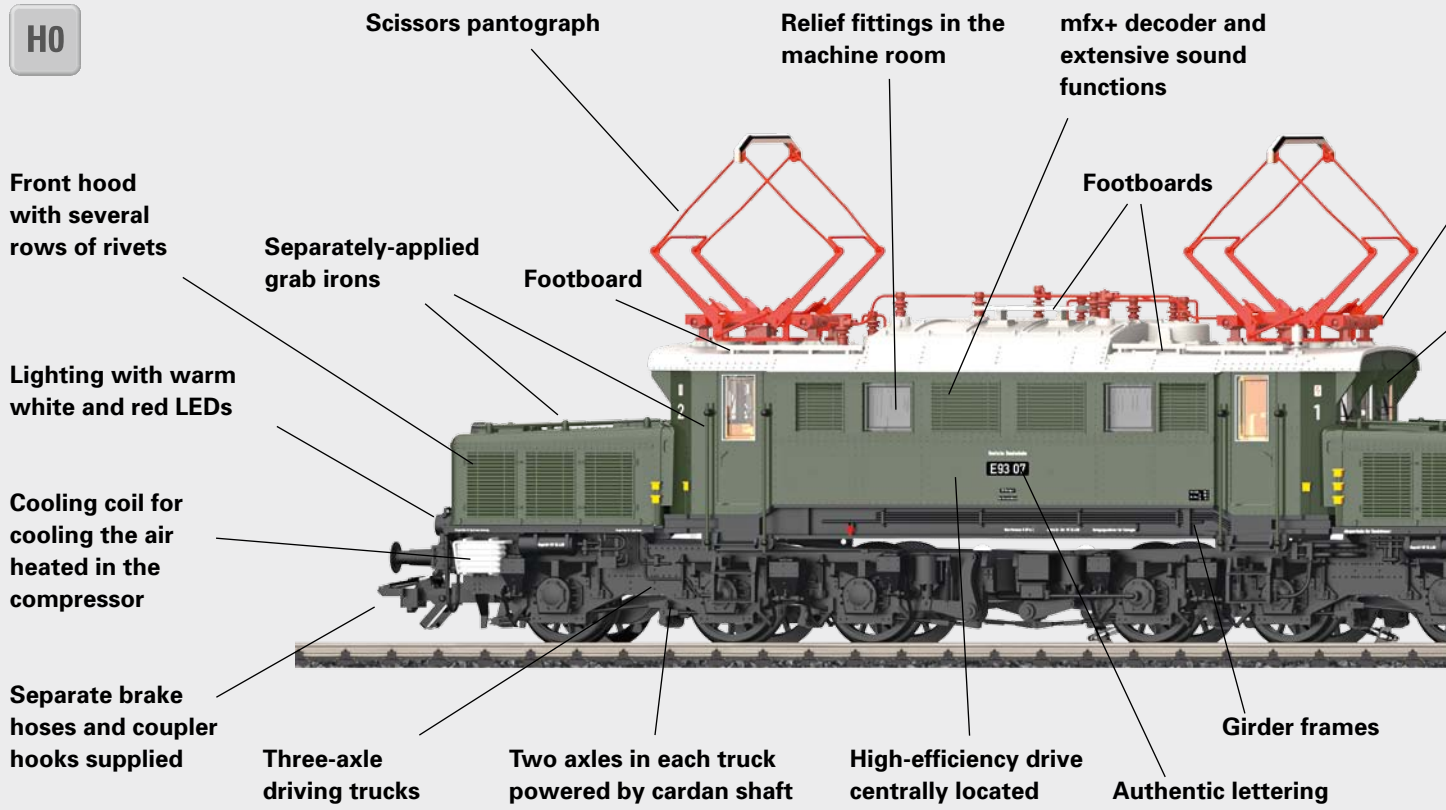


125th anniversary of the Rhaetian Railway

Exclusive Club trip to the land of dreams

Magnificent landscapes, famous locomotives and superlatives of rail engineering – the railwayland of Switzerland is blessed with sensational rail lines. Club members will be able to enjoy these sensations from **17 to 21 May 2014** when, to coincide with the 125th anniversary of the Rhaetian Railway, Bahnreisen Sutter in cooperation with Märklin is arranging a trip to the highlights of the Swiss rail paradise exclusively for them. During the trip, Club members will experience the UNESCO World heritage Albula railway as well as a journey with the Bernina crocodile from St. Moritz to Tirano or the Nostalgia Train along the upper reaches of the River Inn. Detailed information on the trip and how to make reservations will be published in Club News 01/2014. As an advance indication, the price is expected to lie between 1,500 and 1,600 euro per person.

H0



H0 Club model 2014: E 93 with mfx+ decoder and car sets

Heavyweight with cult status

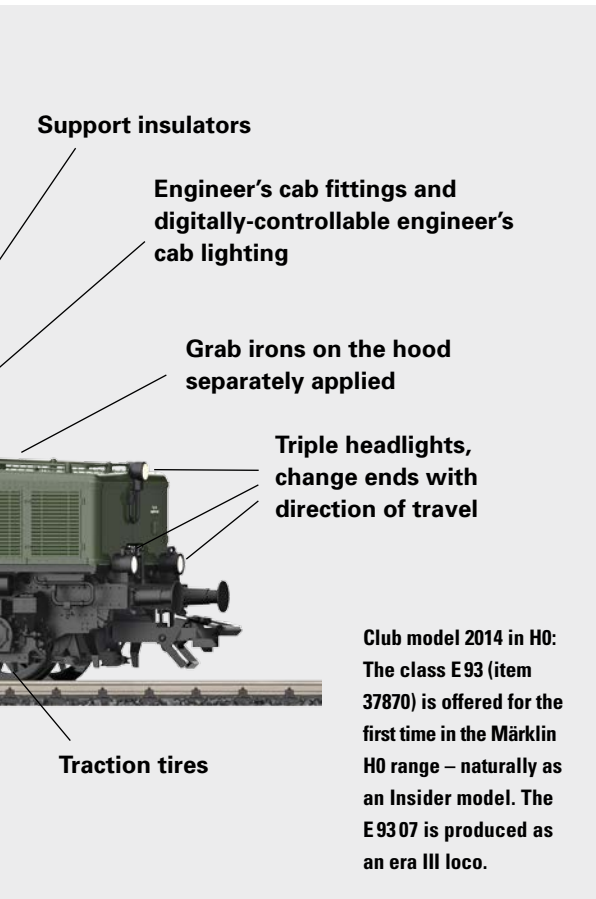
The heavy freight loco E9307, as Club model 2014 in H0, is the first Insider model to be delivered with an mfx+ decoder. Furthermore, in addition to the added running pleasure, the "German Crocodile" has sumptuous detailing.



Progenitor: The E 93 was the founder of an entire generation of heavy freight train electric locos.

"The class 93 locos were like small dinosaurs", Wolfgang Ihrlich recalls. The Team Leader rolling stock in the DB Museum Coblenz once took the chance of a "comfortable" engineer's cab trip on a class E93, when the engineer asked him to keep a tight hold on the thermos flask. "As the heavy six-axle freight loco started off, everything within a radius of ten meters (about 35 feet) started shaking; in the cab, it was as if an earthquake was starting". One of the German Crocodiles, the E9307, is today preserved and in his custody: "The E93 is in fact the first step towards a complete generation of modern freight locomotives".

The historical significance of the respect-commanding E93 makes it an ideal prototype for the Insider H0 Club model. "There was excellent documentation available for the loco with



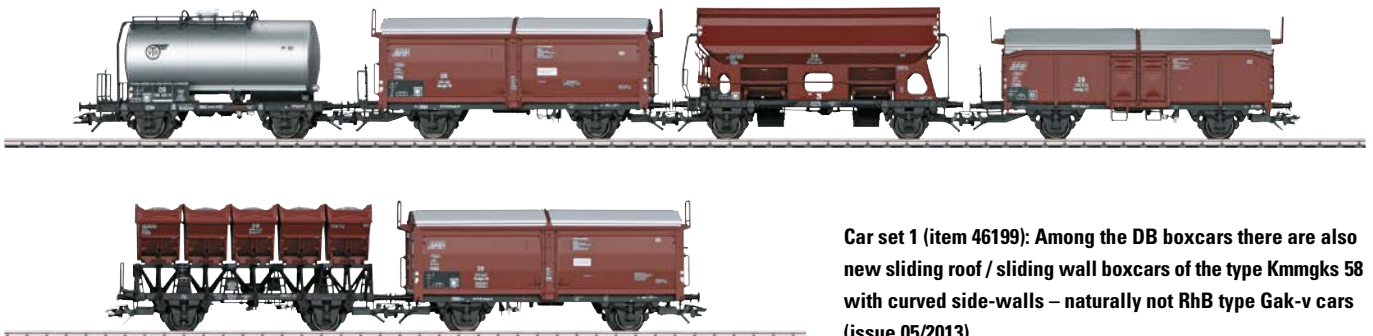
Prototype: The 2014 Club model places E 9307 as it was running in about 1960 – not like the preserved loco (illustrated) in the DB Museum in Coblenz, which for example has the third headlight over the engineer's cab window, and not on the hood.

road number E9307, so we were able to produce the model correspondingly accurately", explains Märklin Product Manager Karl-Heinz Grässle. "True, the model loco is today's preserved loco according to its number, but we decided not to model the museum's loco, but to produce it as it was running in about 1960". It goes without saying that the model will be manufactured with the authentic sound effects of the original locomotive". In a Club model, Design and Development departments always like to show what they can do. "The very fine engraving and the metal superstructure and the hood with their endless

rows of rivets are exceptionally worthy of attention", is Karl-Heinz Grässle's verdict. "But the 'roof garden' of E9307, with its separately-applied insulators, masses of leads, footboards and the two pantographs is no less detailed". For the drive unit of the heavy electric freight train loco, Märklin turns to a tested motor. The centrally-mounted motor with cardan shaft and drive to both trucks has already thoroughly proved itself in new designs and thus was selected for the E93. Two axles are driven in each driving truck – this design of drive permits a clear view into both of the engineer's cabs.



Detail car set 2 (see page 8): Representation of the three-section end doors of the Gltmmehs 62 boxcar.



Car set 1 (item 46199): Among the DB boxcars there are also new sliding roof / sliding wall boxcars of the type Kmmgks 58 with curved side-walls – naturally not RhB type Gak-v cars (issue 05/2013).

Classes E93 and E94



Class E94: Longer and heavier than the E93 – more massive roof fittings make it look even more powerful.

The heavy class E93 freight locomotives were specialists for the line Stuttgart-Ulm, which included the Geislingen Incline. The first "German Crocodile" was followed by the class E94, which was to be found all over southern Germany. Thomas Estler writes in "Das grosse Loktypenbuch" that she was "designed to accelerate freight traffic in the central highlands". She had an even greater hourly rating (E93: 2,502 kW; E94: 3,300 kW); she was faster (E93: 70 km/h – 43 mph; E94: 90 km/h – 55 mph), longer (E93: 17,700 mm – 58'8" overall; E94: 18,600 mm – 61') and heavier (service weight E93: 117.6 tonnes – 129.6 US tons; E94: 118.7 tonnes – 130.8 US tons). Also especially noticeable on the E94 are the huge roof fittings. The DB's sub-class E94.2 indeed had an hourly rating of 4,680 kW and a service weight of 123.0 tonnes (135.6 US tons).

The Club models are on their way

Closing date for orders: March 31st, 2014

1. The 2014 Club models in H0 gauge (item 37870: class E93 electric freight train locomotive; item 46199: boxcar set 1; item 47321: boxcar set 2) will be produced in once-only series exclusively for Club members. You will find complete product information in the Club News 05/2013 and online under club.maerklin.de
2. The order form for the models was enclosed with the mailing 05/2013. If it has been mislaid, or if you only just joined the Club, you are welcome to ask our Club team to send you a copy. **Closing date for orders is 31 March 2014. Deliveries are scheduled for the start of the 3rd quarter, 2014.**
3. Every Insider Club member can order one example of each of the Insider models through the Märklin-MHI retailer. We expressly state that the order forms are not transferable.
4. It is planned to send out personalized Certificates of Authenticity at the end of 2014 directly to those who have ordered the class E93 electric freight train locomotive.

**Car set 2 (item 47321):
The Gltmms 62 boxcars
and Gltmmehs 62 boxcars
with end doors are new
developments.**

The 2014 Club model is extremely playable, as the locomotive is fitted with an mfx+ decoder. "that allows even more realistic play on the model railroad", emphasizes the product manager. "When a Central Station is used, most convincing realism can be attained for controlling the loco". With a virtual engineer's cab, the Insider can for instance drive the loco or take on operational supplies. Apart from this, the E93 offers many more digitally controllable sound and lighting functions". The lighting is based on maintenance-free

warm white and red LEDs. The loco is correctly modeled with a triple headlight system and two rear marker lights, and these red lights can each be switched off separately. The engineer's cab lighting is digitally controllable, and a 'double-A' light function is also included. What this means is explained by locomotive engineer Mark Kaipf, also a member of Stuttgart Märklin Round Table MIST7: "In shunting movements and trips without cars, on most engines the triple headlight is lit up at both ends – the so-called 'double-A' light. For main



line running, the rule is: triple headlight at the front, twin marker or tail-lights at the back". Loco E9307 (item 37870) will be produced in a once-only series exclusively for the Insider Club, as will the two boxcar sets (items 46199/47321). "We want Club members to be able to make up a freight train typical of the 1960s" says Karl-Heinz Grässle explaining the offer. "With two sets each of six cars, that's already a very respectable freight train". In fact, just what the doctor ordered for the heavy freight loco E9307.

Naturally enough, each of the two exclusive car sets include new developments. "As well as hopper car, tank car and dumper car, the first car set has new sliding roof / sliding wall boxcars of type Kmmgks 58 with curved side-walls", says the product manager, giving us an example. "And in the second car set alongside gas tank car and stake cars, there are new boxcars of types Gltmms62 and Gltmmehs62 with end doors".

Text: Rochus Rademacher/photos: C. Bellingrodt/ Asmus collection, T. Estler, Märklin, CC1.2/Urmelbeauftragter



Hard worker: The E93 breasts the summit of Geislingen Incline by Amstetten.



Long Train Event: An E93 near Maulbronn with open boxcars as far as the eye can see.



Colorful: In 1978, a class E 93 loco passes Grünfeld with a mixed train of passenger and boxcars.

The character "Bubikopf": the class 64 has an unmistakable profile – the 64 250 captured on film in Aalen in 1968.



Insider model 2014 in Z: "Bubikopf" 64 284

Surprisingly different

Standard locomotives are defined by having identical parts. But if you look carefully at the finely-detail model of 64 284, you will find many deviations modeled which make the Z-gauge Club model for 2014 something extra-special.

There were finally 520 examples of the 64 class 2-6-2 passenger tender locomotive constructed. "And there were still slight differences between the building lots of this squat little locomotive, and they can be identified in the 2014 Club model", Jürgen Faulhaber tells us. Märklin's Z-gauge Product Manager draws our attention to the disc wheels of the trailing wheelset and the leading wheels with spokes. "To start with, the side-tanks were riveted, later welded, and the engineer's cab was either fitted with a simple built-in ventilation or a ventilator fitted on top". In the Club model, even

the number-plate is worthy of attention: "Our 64 284, modeled to represent a German Federal Railroad era III loco, still has the old number plate with pointed figures".

The 2014 Club model in Z is a completely new tooling. Typically for Märklin, chassis and superstructure of 64 284 are of metal. The finely-detailed loco is 57 mm (2-1/4") long. For instance the boiler: "We can see pipe work, the regulator rod, the sandboxes with sand fall-pipes, steam dome and warning bell mechanism" says Jürgen Faulhaber, pointing out the details. Even the locking levers around the

Delicate: The passenger car set (item 87509) to match the class 64 tank loco (88740) consists of four different main line passenger cars, each with a different road number.

Z



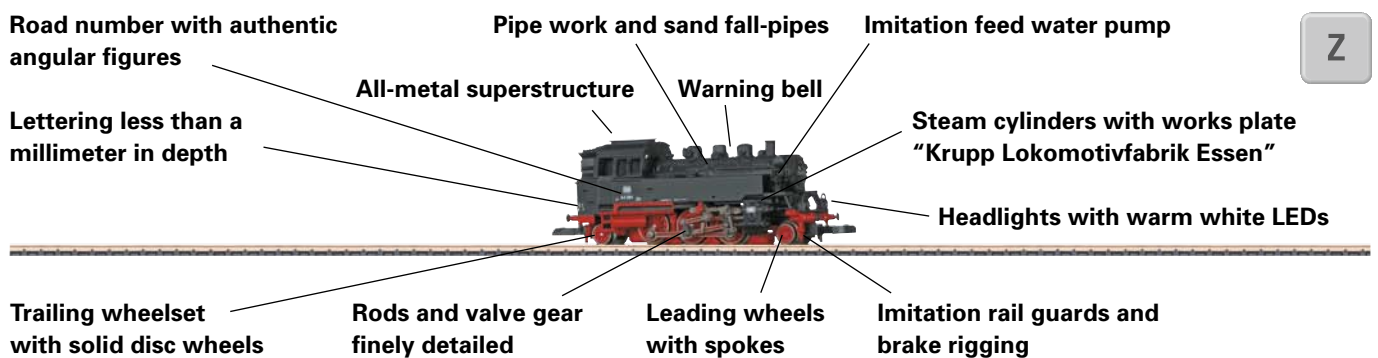
**Closing date for orders:
March 31st, 2014**

How to obtain the 2014 Z-gauge Club models

1. The 2014 Z-gauge Club models (item 88740: class 64 steam tank locomotive; item 87509: passenger car set) will be produced in a once-only series exclusively for Club members. You will find complete product information in Club News 05/2013 and online under club.maerklin.de
2. The order forms for model items 88740 (class 64) and 87509 (passenger car set) were included with the mailing 05/2013. If it has been mislaid, or if you only just joined the Club, you are welcome to ask our Club team to send you a copy. **Closing date for orders is 31 March 2014. Deliveries are scheduled for the 3rd quarter of 2014.**
3. Every Insider Club member can order one example of the Insider models through the Märklin-MHI retailer. We expressly state that the order forms are not transferable.
4. At the end of 2014, it is also planned to send out personalized Certificates of Authenticity directly to those who have ordered the class 64 steam tank locomotive.



Jürgen Faulhaber, Product Manager Z-gauge: "The 64 284 shows how Märklin is pushing out the boundaries of Z-gauge detailing".



smokebox door are modeled, and the engineer's cab is decorated with rows of tiny rivets. "On the buffer shank the step to the smokebox door is modeled and on the buffer beam itself, there are two state railroad design lamps as part of the chronologically-correct triple headlight". On the model the triple headlights of warm white LEDs change ends with the direction of travel.

The chassis of the Club model also repays closer inspection: "Coupling rods, connecting rods and piston rods are all finely detailed, and feed-pump, brake rigging and rail guards are all meticulously modeled", the Z-gauge product manager emphasizes. Naturally the rail guards, positioned directly above the top of the rails, are modeled both front and rear: "After all, the prototype was designed to run both forwards and backwards at 90 km/h (56 mph)". To put its power on the track, all three coupled axles of the Insider model are driven. Ladders are attached to the elegantly-shaped coal bunker leading up to a footboard. Painting and lettering are also part of the quality specifications for a Club model. The black areas are all evenly finished in a semi-

matt finish and the lettering is flawless: the cylinders bear the works plate of the Krupp locomotive factory in Essen as constructor of the prototype, "and you can only read the lettering on the bunker with a magnifying glass – but read it you can", Z-Manager Faulhaber assures us.

The steam loco (item 88740) will be produced in a once-only series exclusively for Insider Club members, like the exclusive set of passenger cars (item 87509) with "thunder box" cars: The four two-axle DB standard main-line cars all have different road numbers, and go together to form a classic local passenger train, with two 2nd class cars, one 1st/2nd class car and Pwie standard baggage car, striking on account of its service compartment with raised conductor's look-out. "The passenger car set matches 64 284 perfectly; the loco's main stamping ground was in local passenger train and lightweight semi-fast train services", explains Jürgen Faulhaber. The class did however also power freight trains – "The Bubikopf was indeed a maid-of-(almost)-all-work".

Text: RR/photos: U. Budde, Kötze, Märklin

H0



4415.573 "Kinder gestalten 1"

During the 30th IMA, these cars were sold in the context of the children's campaigns and painted by children.



4890.131 "Kinder gestalten 2"



4415.575 "Oktoberfest 2013" and **4415.576** "Oktoberfest 2013" including tin (not illustrated)

Märklin Flagship Store, Bahnhofplatz 7, 80335 Munich, Germany, tel. +49 (0) 89/24 20 66 36, epost@maerklin-store-muenchen.com, www.maerklin-store-muenchen.com



8600.157 "Oktoberfest 2013"



94419 "Clariant"*
Clariant International,
4133 Pratteln, Switzerland



98116 "20 Jahre Spur Z-Ladegut"
Spur Z-Ladegut, Hasslerstrasse 5,
52066 Aachen, Germany,
tel. +49 (0)2 41/50 01 13, info@
spurzladegut.de, www.spurzladegut.de



94420 "MHI zur IMA 2013"

These special cars were sold by the Märklin Händler Initiative (MHI) during the IMA 2013. The car is packed in an attractive metal box.



98114 "MHI zur IMA 2013"



94427 "1. Märklin Flagship Store"
This car was produced and sold to mark the opening of the 1st Märklin Flagship Store Munich.



4870.008 "Gulf Oil"
Tog & Tekno, Boulevarden 42,
9000 Aalborg, Denmark,
tel. +45 (0) 98 12/04 11, info@
togogtekno.dk, www.togogtekno.dk

Exclusively available from Modellbahn West:
Märklin Store CentrO, Centralallee 9/L3, 46042 Oberhausen, Germany, tel. +49 (0)2 08/3 04 00 08, Oberhausen@Modellbahn-West.de
Märklin Store Essen, Limbecker Platz 1a, 45127 Essen, Germany, tel. +49 (0)2 01/74 75 85 44, essen-limbecker@modellbahn-west.de
Märklin Shop Stuttgart, Löffelstrasse 22, 70597 Stuttgart, Germany, tel. +49 (0)7 11/75 86 43 39, stuttgart@modellbahn-west.de
www.modellbahn-west.de



98115 "Starlight Express"
Available in the Märklin Museum while stocks last.



4415.577 "Degraa"
Modellbahn Center Hünerbein am Markt OHG, Markt 9-15, 52062 Aachen, Germany, tel. +49 (0)2 41/ 3 39 21, info@huenerbein.de, www.huenerbein.de



4415.578 "Rince Cochon"
Au Pullman, 70, rue d'Amsterdam, 75009 Paris, France, tel. +33 (0)1/53 21 96 71



95020 "Beverly"*
Beverly Food & Beverage BVBA,
B-2390 Malle, Belgium



4415.823 "Biene Maja"



4415.824 "Flip"



4415.825 "Willi"

Please note that

Promotional models are only manufactured for Märklin dealers or industrial companies etc. (the latter are marked with an *). Normally models marked with an * are not offered for sale and for this reason, no addresses are given. Only models already delivered to the respective customer may be publicized, and only when the customer has given explicit permission for this.



Held question-and-answer sessions at the get-together exclusively for Club members: Märklin Managing Directors Wolfrad Bächle (left) and Florian Sieber. Covering everything from model policy and technology to distribution, both sides assessed the exchange of ideas as extremely fruitful: we would like to see it again.

Get-together: Club members in discussions with the Märklin management

“A new era is starting at Märklin”

A spirit of optimism at Märklin – that was clearly in the air at the IMA in the four exclusive rounds of discussions between management and the Club members. Märklin Managing Director Wolfrad Bächle: “Märklin has 150 years behind it, and a new era is now here to start the next 150 years”.

In 2013, over 7,000 Insiders celebrate 20 years' membership, 60 of these “founder members” had the luck of the draw to be able to take part in the four rounds of talks at the IMA with the extended Märklin management team. Also there: the Märklin, Trix and LGB product managers. The subjects covered ranged from product policy, through quality and service to retail and distribution strategies. Naturally there were technical questions too: drive, loco-tender spacing, C-track – nothing was left out. “Thank goodness that with Simba Dickie a German family concern has taken Märklin over”, was the spontaneous reaction of one Insider, and it quite clearly pleased Märklin Managing Director Florian Sieber no end – obviously everyone thinks so: “My father and I visited the factories in Göppingen and Győr and we were instantly impressed by the proportion of in-house manufacture, the workmanship and the products – we are amazed just how much

care and attention the staff put into the products”. The managing director, responsible for sales and marketing, takes a look ahead: “We will continue with all gauges of the Märklin, Trix and LGB brands and help them to shine,

Concentrated talks: Club members at the get-together during the IMA, held together with the management team and product management.



Märklin Engineering: fresh ideas for the model railroad



Märklin Development Manager Lingens: "A locomotive is an extremely interesting piece of engineering".

The LC display as a LINT door, the mfx+ engineer's cab simulation on the Central Station – behind these smart ideas is Märklin Engineering GmbH (ME). "It's our job to develop for Märklin innovative products with cult status and emotions", explains ME Managing Director and Märklin Development Manager Martin Lingens at the get-together with the members. "We cooperate with students doing their bachelor thesis and semester papers with us, or who are here for work experience or as trainees". Through cooperation with technical universities, the ideas factory achieves two aims at once: "We incorporate the ideas of the younger generation into our products and we acquire development engineers". Following a start-up phase, the concept is starting to pay off. "We had to make it clear just how complex a mechatronic product locomotive is", says ME boss Lingens. "The class 58 for instance has over 300 individual parts. The decoder installed is part of a digital system in which various bus systems are used, such as a CAN-bus for communication between control units". The Märklin Engineering GmbH team is driven by the question as to how far the play value of this highly interesting engineering object can be enhanced. The model railroad is also in focus as a starting point for teaching: "The model railroad does after all vividly impart mechanics, electronics and programming".

The LC display as a LINT door, the mfx+ engineer's cab simulation on the Central Station – behind these smart ideas is Märklin Engineering GmbH (ME). "It's our job to develop for Märklin innovative products with cult status and emotions", explains ME Managing Director and Märklin Development Manager Martin Lingens at the get-together with the members. "We

make our presence felt in the model railroad world in public and gain access to new fields of customers and new markets".

In the open discussions with the Insiders, Engineering Managing Director Wolfrad Bächle gave details of the most important measures: "This year and next year, 20 million euro will be invested in reconstructing the factory in Hungary and in modernizing the machinery in Göppingen". Additional posts will be created in Development too. In detail authenticity, Märklin has advanced far further than other manufacturers in recent years, and pushed out the boundaries of the technically feasible in its products. Today, for instance, an average H0 steam loco would consist of some 320 individual parts; ten years ago, this figure would have been about 250. This growth in detailing can be experienced live by any model railroader who takes a Märklin loco in his hands and studies in depth the detail worked in to the rods and pipework, cylinders and checker plate.

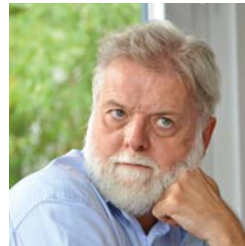
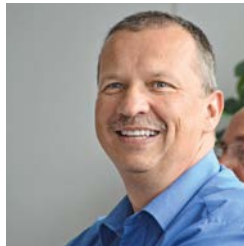
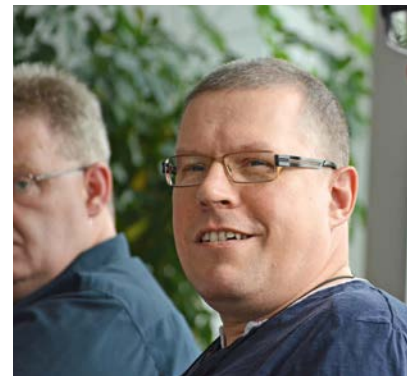
Innovative ideas from the college-like Märklin Engineering GmbH are incorporated into the product world, as for instance the mfx+ system as engineer's cab simulation with operating supplies. "On C-track, we are working on two



The limits of technical feasibility: The high level of detailing such as on the Club model of 45010 is a visible sign of quality progress made by Märklin.



Open discussion: Praise, suggestions for improvements, prospects – management team and the product managers appreciate the Club members’ depth of knowledge on the Märklin scene at the get-together.



“I know of very few companies with as good a customer loyalty program as the Märklin Insider Club. Märklin Magazin, Club News, videos, Annual Cars – the annual subscription is well worth while”. Marc Gerber



“Märklin products are worth every cent – I don’t hide mine in a cupboard; my models are working all the time. What counts for me is the pure enjoyment I get from the models running on the layout”. Klaus Mell

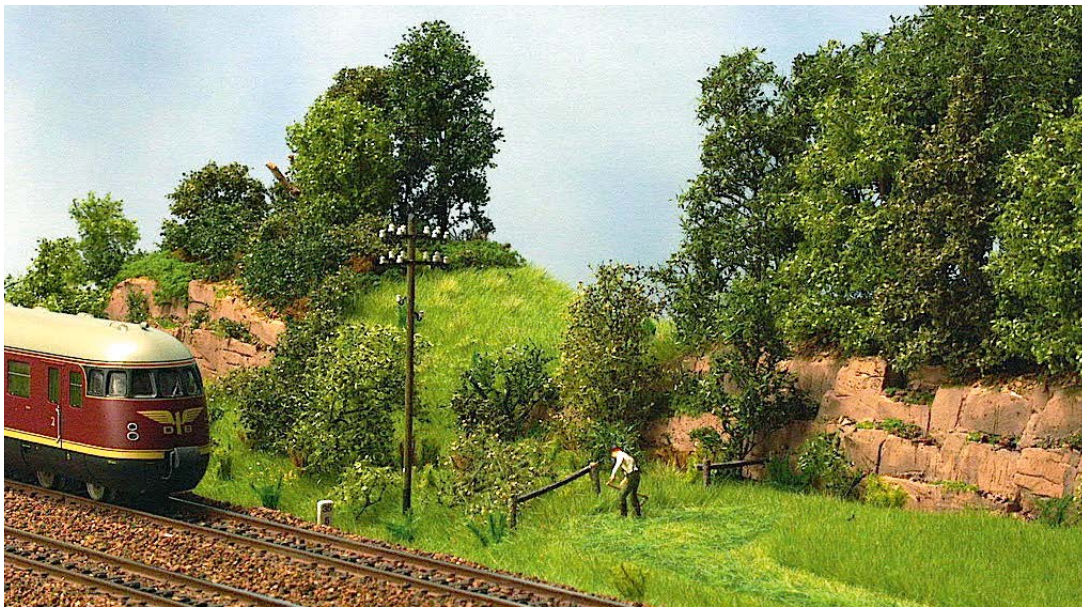
strategic supplementary items, next year will see new signals and we will be making substantial sums available to support all the gauges and digital systems”, says Wolfrad Bächle reporting on the spirit of optimism at product level. Of major importance for the board and product management is that the high quality of all Märklin products is maintained. “There are defined plans laid down for inspections for each new component; prototypes are tested for endless hours on layouts by Quality Assurance, every locomotive is subjected to a final inspection after assembly and the Audit performs functional tests”, says Bächle as he outlines the quality management program. Part of this high specification for quality has been enabled by the return of manufacturing as in Z-gauge. The gauge offensive is only possible because almost all production facilities have now been returned to Europe. However, a number of molds will have to be extensively restored, and this is an operation which in the past caused delays on the production line. “Due to the humidity, many valuable molds have become corroded; many were incorrectly stored without having been oiled beforehand”, explains Wolfrad Bächle.

When the molds are set up, damage isn’t always visible immediately, and there is also some shrinkage: “A model is constructed from up to about 30 molds, and if for example the feedwater pump mold is missing, then Development has to get busy and make one”. Bächle promises that Märklin will set course at full speed ahead for all gauges. Both MDs gave a commitment for Z and gauge 1 – this was one of the crucial questions for many Insiders. There will be significant investment to support both gauges. That will be clear from the many Z models just arriving in the shops, while there is especial pride in the new gauge 1 flagship, the P8, which will be on sale at the end of the year. “With our production expertise, we have an enormous technical lead and in Göppingen we are already building 50,000 H0 locomotives a year once again”, declares managing director Florian Sieber. “With the ‘my world’ range, we have found our way back into the children’s room, and our new developments process promises many exciting, detailed, high-quality products”.

Text: R. Rademacher/photos: Kötze, PW, H. Seehuber



Conversation piece: The KIST NH enjoys sitting around Manfred Mayer's large layout (top), which is always good for subjects for discussion. Other round tablers too have constructed their own layouts: Andreas Druhe designs dainty little everyday scenes (below). His H0 modules are often to be admired at exhibitions.





Strong team: part of the KIST NH at their meet in "Mannis Eisenbahnkeller" – from left: N. Schröder, F. Opialla, H. Willius, M. Mayer (round table organizer), D. Pfeiffer, L. Amrehn, G. Korn and F. Amrehn.

Portrait: Kassel Insider Round Table North Hesse (KIST NH)

"We like to allow diversions from the subject"

The sense of déjà-vu is almost tangible at the Kassel Insider Round Table (KIST NH): I must have been here before. Reasons for the feeling of familiarity: the friendliness, the plain speaking and the pleasure in model railroading.

"Serious? No, all we take seriously here are model railroad problems", says Dirk Pfeiffer, stressing the play and fun factor they enjoy at the round table meets. "We chew over everything specifically to do with model railroads". And with a glance at the good dozen or so present, the KIST-NH co-founder grins and adds: "We like to deviate from the subject at times". But that's what it's all about: everyone brings what they like – a new loco, an idea for a trip out, problems with the model railroad or maybe even a track layout to be looked at. Now everyone is sitting, like the audience before a stage, in a row in "Manfred's railroad cellar", in front of Manfred Mayer's beautiful H0 layout, which has already been featured in the Märklin Magazin. The Märklinist, called Manni by all, is co-founder and organizer of

the round table, which he dismisses as a "bagatelle": "Either the dates are on our homepage or I send out a few e-mails and make a few calls – it's all quite informal". KIST NH meets up ten times a year – "regularly irregularly", as round table Norbert Schröder puts it. The regulars are from the Kassel region, and they also come from Recklinghausen, Dillenburg and Warburg – or, as Schröder says with a twinkle "from anywhere in Germany within 500 kilometers – 310 miles – of Kassel".

Trains are snaking their way around the layout, under the control of the Central Station and the Märklin App on the iPad. "there at the front I have modeled the Henschel works in Kassel, and right now, the class 50.40 happens to be standing just there", says Manni, turning





Loco-smiths: In the "Henschel" in Kassel the 50.40 class was once built.



Realistic: Kassel was home to the rail car factory of Wegmann and the Henschel factory, and MIST NH keeps the tradition alive.

attention back to the model. "The Franco-Crosti loco was built by Henschel". And conversation turns to the various favorites – the class 103 and the steam loco 01 150, the VT95 railbus, the VT08 'World Champions' train, or even, according to Ludwig Amrehn, "the little green

Köf II with its 'Südzucker Warburg' lettering – I actually drove the prototype myself". Everyone here has his favorites, comments Gerd Korn, the third co-founder of the round table. "We don't all have to have the same opinion, but we all pull the same way – and have done for ten years now".

That the chemistry is just right is clear from the grill evenings in summer, excursions to the Meiningen steam loco workshops, to Göppingen, to Long Train Events put on by another Insider round table or to the model railroad land Heli in Hessisch Lichtenau.

"We often meet there for breakfast on Sundays and visit seminars together or run the 300 meter (almost 1,000 feet) track as guests", as Manfred Mayer says.

At the moment, at the top of the non-existent round table agenda there is layout construction and operation. "Having to construct a layout is one of the consequences of being involved with Märklin", maintains Ludwig Amrehn. "And when the layout is finished, it



External running day: KIST NH is also allowed to operate the layout in the Modellbahnland Heli. As professionals, the Märklinists are trusted.





Real or not? At first glance, the roads and countryside motifs by Andreas Drühe might be photographs taken in nature.

naturally has to be rebuilt". The round table always helps, while in the course of time a new subject for discussion develops, adds Florian Amrehn, who convinced his father of the advantages of digital switching – with his own layout.

The huge subject of the model railroad allows everyone to have his own individual pleasure – the group respects favorites and is rewarded by liveliness. Everyone came to the hobby in his own particular way; statements range from "realizing a childhood dream" and "the virus infected me when I was six" to "facing the challenges of technology". And Helmut Willius speaks for every one of them when he says he "also simply enjoys a beautiful diorama which illustrates an untroubled world". The commonality of purpose reinforces the comradely assistance. "A layout idea has very little to do with reality, and if alone you might struggle, with someone to help, the work almost does itself", says spokesman Manfred Mayer of the general principle. "The broader the range of experience, the better – we have precision engineers and bricklayers as well as metalworkers, woodworkers and computer specialists".

Something which rather sets the KIST NH apart is the variety of roads which led to Märklin. With number one, all his young friends had Märklin layouts; the second was made a present of a Märklin loco by his wife after years of railroad abstinence, and just went on from there, and for the third – well, Märklin means model railroads. And Ludwig Amrehn is totally innocent. "My wife said when our first child arrives, it gets a model railroad – whether it's a boy or a girl". And? "Our daughter was born in January, and in February we unpacked the first Märklin starter set".

Text: R. Rademacher/Photos: A. Drühe, M. Mayer, RR

Description KIST NH

The round table

In 2013, the KIST NH (Kassel Insider Round Table North Hesse) will be celebrating its tenth anniversary. "Since the first round table meet in March 2003, we have been growing continually", KIST NH organizer Manfred Mayer tells us. The model railroad enthusiasts have an informal meet at least ten times a year, and have no association structure – anyone who has time just drops in as well to the Monday running days at 'Manni' Mayer's. "Guests are always welcome if they let us know in advance", says co-founder Mayer, stressing the open nature of the round table. Contact: Manfred Mayer, Tel. +49 (0) 56 65/28 93, E-mail: m.baer@t-online.de, Homepage: www.kist-nh.de

The region

A trip to KIST NH is well worth making – quite apart from enjoying the round table, the North Hesse highlands and the historic Kassel Wilhelmshöhe are there to be enjoyed. Round table Frank Opialla lists four other rail attractions:

- the steam train trip with the 'Hessencourrier' from Kassel to Naumburg, during which grades of up to 2.9 percent have to be climbed (www.hessencourrier.de)
- the Henschel Museum in Kassel (www.henschel-museum.net)
- the Modellbahnland Heli (www.modellbahnland-heli.de) in Hessisch Lichtenau, with a large Märklin H0 demonstration layout with superbly-laid C- and K-track, workshops and a program of events
- the former Kassel main station attracts as a cultural railroad station (www.kulturbahnhof-kassel.de) behind a late-classic façade with art, cinemas and pubs.

The layout builders

Layouts by KIST-NH activists can be seen in the Internet too. Manfred Mayer's layout is well-documented in Märklin Magazin (03/2009) and under www.mannibaer.de, Geedis (Gerhard Korn) model railroad under www.gwkorn.de and Andreas Drühe has his own H0 modular layout pictures in Flickr (see www.kist-nh.de section "Unsere Anlagen").



At Manni's: Running in the railroad cellar at Manfred Mayer's (4th from left).



Insider round tables

- **13409** Berlin, Sven Richter, Tel.: +49 (0) 171/3 190751, www.mist1.de, info@mist1.de
- **21365** Adendorf/Lüneburg, Wolfgang Merhof, Tel.: +49 (0) 41 31/1880 69, huw-merhof@t-online.de
- **21493** Kreis Herzogtum Lauenburg, MIST 21, Gerd Schöne, Holger Winter, Tel.: +49 (0) 41 56/391, +49 (0) 160/451 33 13, lokprofi43@web.de
- **22419** Hamburg, Stefan Wirth, Tel.: +49 (0) 45 37/70 75 57, www.hamst.de, info@hamst.de
- **23552** Lübeck + 24103 Kiel, Peter Wulf, Tel.: +49 (0) 43 81/74 17, www.mit-nord.de, insidertreff-nord@gmx.de
- **23556** Lübeck, Am Grenzwall 20/22, Volker Scharf, Tel.: +49 (0) 451/49 51 68, volkerscharf@foni.net and Reiner Wegner, Tel.: +49 (0) 451/499 15 62, www.mit-stammtisch-luebeck.de
- **23879** Mölln, Michael Koop, Tel.: +49 (0) 45 42/861 70, maerklin-freunde-moelln@gmx.de
- **24114** Kiel, Winterbeker Weg 49, Haus des Sports, Hans-Ulrich Druske, Tel.: +49 (0) 45 21/7 00 70, hans-ulrich-druske@t-online.de; Rainer Schlempeke, Tel.: +49 (0) 172/5 43 23 02, rainer.schlempeke@gmx.de, <http://modulbauimteam.de>
- **25541** Brunsbüttel, Jörg Wagner, Tel.: +49 (0) 48 52/53 37 35
- **25980** Sylt OT Rantum, Michael Maenss, Tel.: +49 (0) 4651/2 23 48, mikkel@t-online.de
- **28870** Ottersberg, Wümmeweg 11, Lothar Walter, Tel./fax: +49 (0) 42 05/81 41
- **31134** Hildesheim, Rüdiger Stock, Tel.: +49 (0) 171/6 43 80 69, www.mist-hi.de, info@mist-hi.de
- **31582** Nienburg, Carsten Heling, Tel.: +49 (0) 50 21/6 00 29 49
- **31832** Springe, Käthe-Kollwitz-Str. 21, Holger Kehrstädt, Tel.: +49 (0) 50 41/97 14 15, Deister-Ice@gmx.de
- **32108** Bad Salzuflen, Paul Sander, Tel.: +49 (0) 52 22/98 91 88, pasa2603@t-online.de, and Ralf-Udo Heitmann, Tel.: +49 (0) 52 22/827 52, heitmann.badsalzuflen@t-online.de
- **32257** Bünde, Nelkenstr. 4, Hans Bechinka, Tel./fax: +49 (0) 52 23/4 34 16
- **32312** Lübbecke, Alfredstr. 15, Hermann Ramm, Tel.: +49 (0) 57 41/23 03 53, h.w.ramm@web.de
- **33378** Rheda-Wiedenbrück, Torsten Piorr-Marx, Tel.: +49 (0) 170/8 96 15 58, anmeldung@mist-owl.de oder torsten.piorr-marx@mist-owl.de, www.mist-owl.de
- **34277** Fuldabrück, Manfred Mayer, Tel.: +49 (0) 56 65/28 93, M.Baer@t-online.de, www.kist-nh.de
- **34560** Fritzlar-Geismar, Eichgarten 12, Alexander Hebler, Tel.: +49 (0) 172/687 69 43, www.insiderstammtisch-geismar.piczo.com, alexander_hebler@freenet.de
- **38100** Braunschweig, Volker Friedrich, Tel.: +49 (0) 58 48/98 10 52, mist3@mist3bs.de, www.mist3bs.de
- **40764** Langenfeld, Rudolf-Harbig-Weg 10, Werner Mey, Tel.: +49 (0) 21 73/394 35 30, werner.mey@t-online.de
- **41462** Neuss, Rainer Pucher, Tel.: +49 (0) 172/2 06 98 91, igel47@gmx.de
- **42275** Wuppertal, Torsten Jahnke, Tel.: +49 (0) 171/9 33 30 50, MIST42@t-online.de
- **44141** Dortmund, Martin Meese, Tel.: +49 (0) 231/43 56 86, martin_meese@hotmail.com, bernd.knaak@uni-dortmund.de
- **44388** Dortmund, Bövinghauser Str. 23, Markus Dyba, m.dyba@cityweb.de
- **45472** Mülheim a. d. R., Kolumbusstr. 110, Krug zur Heimaterde, Hanno Brünninghaus, Tel.: +49 (0) 201/60 82 61, www.stammtisch-ruhrpott.de, info@stammtisch-ruhrpott.de
- **47259** Duisburg, Trierer Str. 10, Hardy Paschen, Tel.: +49 (0) 177/3 01 57 08, hardy.paschen@gmx.de, www.mist-du.de
- **47475** Kamp-Lintfort, Heinz-Dieter Papenberg, Tel.: +49 (0) 28 41/5 11 32, www.mist47.de.vu, HPapenberg@aol.com
- **48076** Münster, Postfach 470243, Christian Schmidt, Tel.: +49 (0) 2582/66 96 99, mist.ms@t-online.de
- **50181** Bedburg, Neusser Str. 2, Restaurant-Hotel Rheinischer Hof, Oliver Schlauch, Tel.: +49 (0) 2 28/3 72 81 77, www.mist5.de, oliver.schlauch@t-online.de
- **51103** Köln, Thomas Nüchter, Tel.: +49 (0) 21 73/1 09 79 75, www.mist51.de, info@mist51.de
- **53619** Rheinbreitbach, Eifelblick 28, Jens Arenberg, Tel.: +49 (0) 170/2 07 77 22, mist-mittelrhein@web.de
- **53721** Siegburg, Fröhliche Eisenbahner, Thomas Hövel, Tel.: +49 (0) 160/1 20 41 24, <http://fe.mailez.de>, fe@mailez.de
- **54329** Konz-Kommlingen, Donatusstrasse 5, Günter Schröter, Tel.: +49 (0) 65 01/1 22 80, guenterschroeter@aol.com
- **54338** Schweich, Schlehenweg 2, Joachim Schlöder, Tel.: +49 (0) 65 02/9 96 92 80, JoachimSchloeder@t-online.de



Insider round table in the Internet:
A current list of Insider round tables will be found as a download under club.maerklin.de



Being there is all-important: Insider round tables are all about the world's greatest hobby, with running and layout construction, sharing thoughts and excursions.

- **55126** Mainz, Am Kirchborn 20 F, Stephan Türk, Tel.: +49 (0) 61 31/47 67 71, tuerk@mpip-mainz.mpg.de & Stefan Claus, stefan.claus@online.de
- **56843** Irmenach, Fehlenacher 1, Klaus Luers, Tel.: +49 (0) 65 41/24 24, Luershome@t-online.de
- **57567** Daaden, Mittelstr. 8, Axel Schmidt, Tel.: +49 (0) 27 43/93 36 60, info@modellbaumeyer.de
- **59757** Arnsberg, Wiedhofstr. 7, Heinrich Franz Hecker, Tel.: +49 (0) 29 32/63 92 94, hfh.abg@t-online.de
- **63179** Hausen, Seligenstädter Str. 45, Ralf Krapp, Tel.: +49 (0) 61 04/7 12 73, ralf.krapp@t-online.de
- **66130** Saarbrücken, Saargemünder Str. 154, Burkhard Eins, Tel.: +49 (0) 681/8 73 95 07 and +49 (0) 178/5 56 94 62, eins@htw-saarland.de
- **67346** Speyer, Eselsdamm 8, Ulrich Klumpp, Tel.: +49 (0) 62 32/67 77 41, fax: +49 (0) 62 32/67 77 42, ulrich.klumpp@mist67.de, www.mist-rhein-neckar.de
- **70374** Stuttgart, Mark Kaipl, Tel.: +49 (0) 71 23/95 32 57, mkaipl@mist7.de
- **70806** Kornwestheim, Guido Wettemann, gwettemann@mist7.de
- **72800** Enningen unter Achalm, Arbachtalstr. 6, Horst Bossler, Tel.: +49 (0) 157/87 54 19 66, www.mist72.de, mist72@mist72.de
- **76676** Graben-Neudorf, Jahnstr. 5, Klaus Flor, Tel.: +49 (0) 72 55/52 56, klaus-flor@t-online.de, www.mist76.de
- **78647** Trossingen, Schulstr. 24, Gerhard Kresser, Tel.: +49 (0) 74 25/32 66 66 and +49 (0) 175/1 61 52 93, gerhard.kresser@web.de
- **79117** Freiburg, Manfred Grimm, Tel.: +49 (0) 7 61/79 69 71, grimm-manfred@web.de
- **79312** Emmendingen, Nelkenweg 4, Eugen Schrepp, Tel.: +49 (0) 76 41/39 45
- **80686** München, Gerhard "Obelix" Hirmer, Tel.: +49 (0) 89/58 67 83, schnellzug@aol.com, www.mucis.de
- **85250** Oberzeitelbach, Lindenstr. 12, Franz Koch, Tel.: +49 (0) 82 54/17 18, LumpiMarok@aol.com
- **85435** Erding, Karlstr. 1 a, Ludwig-Josef Eglinger, Tel.: +49 (0) 81 22/61 16, eglinger@web.de
- **88630** Pfullendorf, Schillerstr. 40 a, Peter Scherer, Tel.: +49 (0) 75 52/92 94 15, spielzeugscherer@freenet.de
- **89073** Ulm, Falk Dehnert, Tel.: +49 (0) 73 48/2 31 30, ulm-mist@bogobit.de, <http://ulm-mist.de.vu>
- **90579** Langenzenn, Falkenstr. 32, Georg Schönfelder, Tel.: +49 (0) 170/98 44 57 0, kontakt@frist9.de, <http://www.frist9.de>
- **95145** Oberkotzau, Wernher-von-Braun-Str. 34, Alfred Peetz, Tel.: +49 (0) 92 86/67 24, a.m.peetz@gmx.de
- **97486** Königsberg, Alleestr. 1, im Volksbildungswerk 2. Stock, Modellbahnclub Mist 97, Alexander Fasslrunner, Tel.: +49 (0) 177/8 01 61 20, info@mist97-koenigsberg.de
- **97794** Rieneck, Brunnenweg 2, Michael Hermann, Tel.: +49 (0) 171/2 13 28 09, www.mist-im-msp.de, stammtisch@mist-im-msp.de
- **A-1000** Vienna, Tel./fax box: +43 (0) 1 597 27 28, <http://www.insider-stammtisch.net>, insider-stammtisch.net@aon.at
- **A-1090** Vienna, Walter Leditzky, led@brg19.at, www.wiener-z-stammtisch.at
- **A-6200** Jenbach, Schalsenstr. 7e, Top 13, Ingo Loske, Tel.: +43 (0) 06 60/5 68 06 52, ingoschmidt.husum@freenet.de
- **CH-3904** Naters, Sonnhalde 9, Werner Baier, Tel.: +41 (0) 27/92 49 2 00, margit.baier@bluewin.ch
- **CH-8320** Fehraltorf, Ueli Schwizer, u.schwizer@greenmail.ch and Rainer Lüssi, rainer@luessi.ch, www.stayathome.ch/helis.htm
- **CH-6037** Root, Postfach 123, Märklin-Freunde-Zentralschweiz (MFZ)
- **DK-2820** Gentofte Kopenhagen, Hoeghsmindevej 21, Christian Vinaa, mist-kop@vinaa.dk

NEW

NEW

A big 'please':

Should the addresses published no longer be correct due to moves or disbandment etc., please notify us.

Club hotline: +49 (0) 71 61/6 08-2 13
(fax: -3 08),
e-mail: insider-club@maerklin.com

We support Insider round tables by making appropriate announcements. We are only able to do this for addresses of private meetings of members of the Märklin Insider Club. We do neither publish any commercial announcements, nor any details for model railroad associations. In addition, we cannot accept any liability for the accuracy of the details published or the content, nor can we guarantee meetings will take place as shown, or that round tables continue to meet. The addresses published are those for existing round tables or for persons interesting in setting one up. We do not differentiate and request that all further information be obtained from the contacts given. Please note that we are not able to pass on addresses by telephone, fax or e-mail.

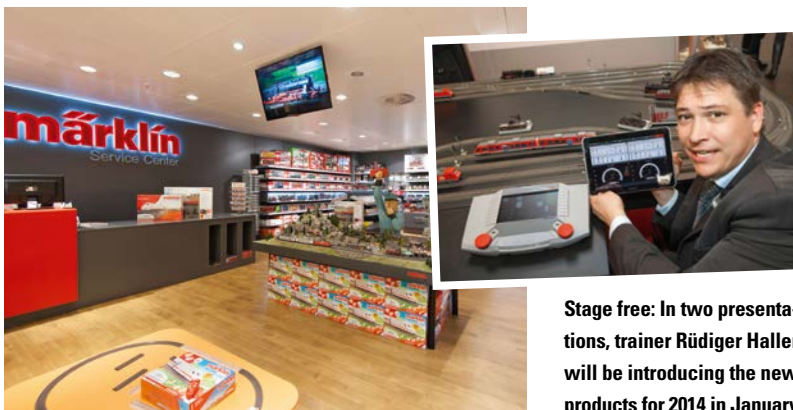
Digital info days

Märklin dealer for the event	Date	Time
Germany:		
10589 Berlin, Mierendorfplatz 16, Modellbahnen am Mierendorfplatz	15.01.2014	10:00–18:00
63739 Aschaffenburg, Karlstrasse 10, Modellbahn Depot Aschaffenburg	16.12.2013	10:00–18:00
66589 Merchweiler, Auf Pfulstrasse 7, Modellbahn-Hobbycenter Saar	12.12.2013	10:00–18:00
67146 Deidesheim, Bahnhofstrasse 3, moba-tech der Modellbahnladen	13.12.2013	10:00–18:00
69214 Eppelheim, Schützenstrasse 22, Modellbahnen Schuhmann	18.12.2013	10:00–18:00
69469 Weinheim, Grabengasse 7, Modellbahn Grimm	17.12.2013	10:00–18:00
76532 Baden Baden, Ooser Hauptstrasse 12, Märklin Shop Baden Baden	10.12.2013	10:00–18:00
77855 Achern, Sasbacher Strasse 1, Vosy's Lok-Shop	04.12.2013	10:00–18:00
88400 Biberach, Marktplatz 4, Gutermann zum Blumenstrauß	06.12.2013	10:00–18:00
Ask your Märklin dealer directly whether they break for lunch.		

Digital seminars: Automatic controls using the Central Station

The Netherlands:		
3011 AR Rotterdam, Westewagenstraat 27, Meijer & Blessing	09.01.2014	19:00–21:00
6041 EZ Roermond, Schoenmakerstraat 14, Modeltreincenter Spoor 14	12.12.2013	19:00–21:00
9711 GP Groningen, Steentilstraat 40–42, De Jonge Miniaturen	17.01.2014	19:00–21:00
Please register for your chosen seminar with the retailer sponsoring the event at least a week in advance.		

New products show 2014 plus digital info days



Stage free: In two presentations, trainer Rüdiger Haller will be introducing the new products for 2014 in January.

Right at the start of 2014 there is a highlight waiting for Club members: the new Märklin, Trix and LGB products will be presented in the run-up to the International Toy Fair in Nuremberg in January 2014. The New products shows will be running at Märklin retailers in Brunswick (14.01.2014) and Radebeul (16.01.2014). "We start at 16:00 with a detailed screen presentation of the new products", Rüdiger Haller, Trainer at Märklin tells us. After that, the New products show will give way to a classic digital info day – tips and things worth knowing all about models and digital technology.

Märklin dealer for the event	Date	Time
01445 Radebeul, Am Alten Güterboden 4, Modellbahnen Grundkötter	16.01.2014	16:00–20:00
38124 Brunswick, Lokschuppen in der Borsigstrasse, Modellbahn Broders	14.01.2014	16:00–20:00
Please ask your Märklin dealer directly for a possible break.		

New cooperation partners

Insider Club members receive very special concessions from our cooperation partners. Here we introduce to you our new partners.



Your Club benefit: Club members pay 5.50 euro instead of 6.50 euro entrance; children 2.00 euro instead of 2.50 euro.



Photos: Siku, Audi and Old-timer Museum

Siku, Audi and Old-timer Museum

Siku-, Audi- und Oldtimermuseum
 Von-Ardenne-Strasse 42, 48703 Stadtlohn, Germany
 Tel.: +49 (0) 25 63/20 59 29
 E-mail: info@automodelle-hoeing.de
 Homepage: www.automodelle-hoeing.de, www.oldtimermuseum-hoeing.de

Times of opening:

All year round Monday to Thursday 14:00 to 18:00, Sundays and public holidays 11:00 to 18:00. At other times, viewing is possible by prior arrangement. Guided tours on all Sundays and public holidays at 11:30 and 14:30 by prior arrangement. Closed on Christmas Eve, Christmas Day, New Year's Eve, New Year's Day and Good Friday.

Car enthusiasts won't want to leave here in too much of a hurry. Over two storeys, the museum will transport you back to the old days with inspirational models and old-timers. On a relaxed stroll, you can unearth many a treasure. Over 12,500 Siku models from 1951 to the present day relate the exciting Siku company history. The second theme of the museum is the large exhibition of the Audi marque and its history. In miniature, models of Auto Union, Audi, DKW, Horch, NSU, Wanderer, Lamborghini and VW 'Beetle', VW K70 and VW Ittis are all here. A further highlight in the middle of this model world is presented by the real cars: more than 65 well-cared-for old-timers and young-timers are displayed in all their glory, with the accent on Audi and Audi special coachworks. After the tour of discovery round the 2,000 m² (21,500 ft²) exhibition, visitors can refresh themselves with coffee and home-made cake in the café.

Freinsheim Historical Toy Museum

Historisches Spielzeugmuseum Freinsheim
 An der Bach 9, 67251 Freinsheim, Germany
 Tel.: +49 (0) 63 53/91 65 57
 E-mail: info@spielzeugmuseum-freinsheim.de
 Homepage: www.bing-museum.de

Times of opening:

The museum is open daily from mid-March to the end of October from 14:00 to 18:00. From November to mid-March, you can visit the museum on Saturdays, Sundays and public holidays from 14:00 to 18:00.

The Historic Toy Museum Freinsheim is devoted to the treasures of one of the great toy manufacturers with its unique collection and lovingly arranged presentation of some 1500 exhibits manufactured by the firm of Bing. All the exhibits are historic and date back to the years before 1932. Model railroad fans will be particularly interested in the section housing tin-plate toys, which presents railroads in 00/H0 up to IV gauges. This theme doesn't come as any great surprise, considering that Stephan Bing, as owner and designer of the Bing table railroad was effectively grandfather of the Trix Express model railroad, which he helped develop at Trix from 1932. Apart from tin-plate toys, steam machines, cars, ships, dolls' stoves, cinematographs, children's books, household implements and much else besides is presented. The Bing pedal car is one of the museum's special highlights. So any time you are on the road in the beautiful Palatinate, you must make a detour to Freinsheim and go on a voyage of discovery in the first and only Bing museum in the world.



Your Club benefit: Club members pay 3.00 euro instead of 3.50 euro for admission to the museum.



Photos: Freinsheim Historical Toy Museum



**The Märklin Insider Club team wishes all Club members
a joyous festive season and a happy New Year!**